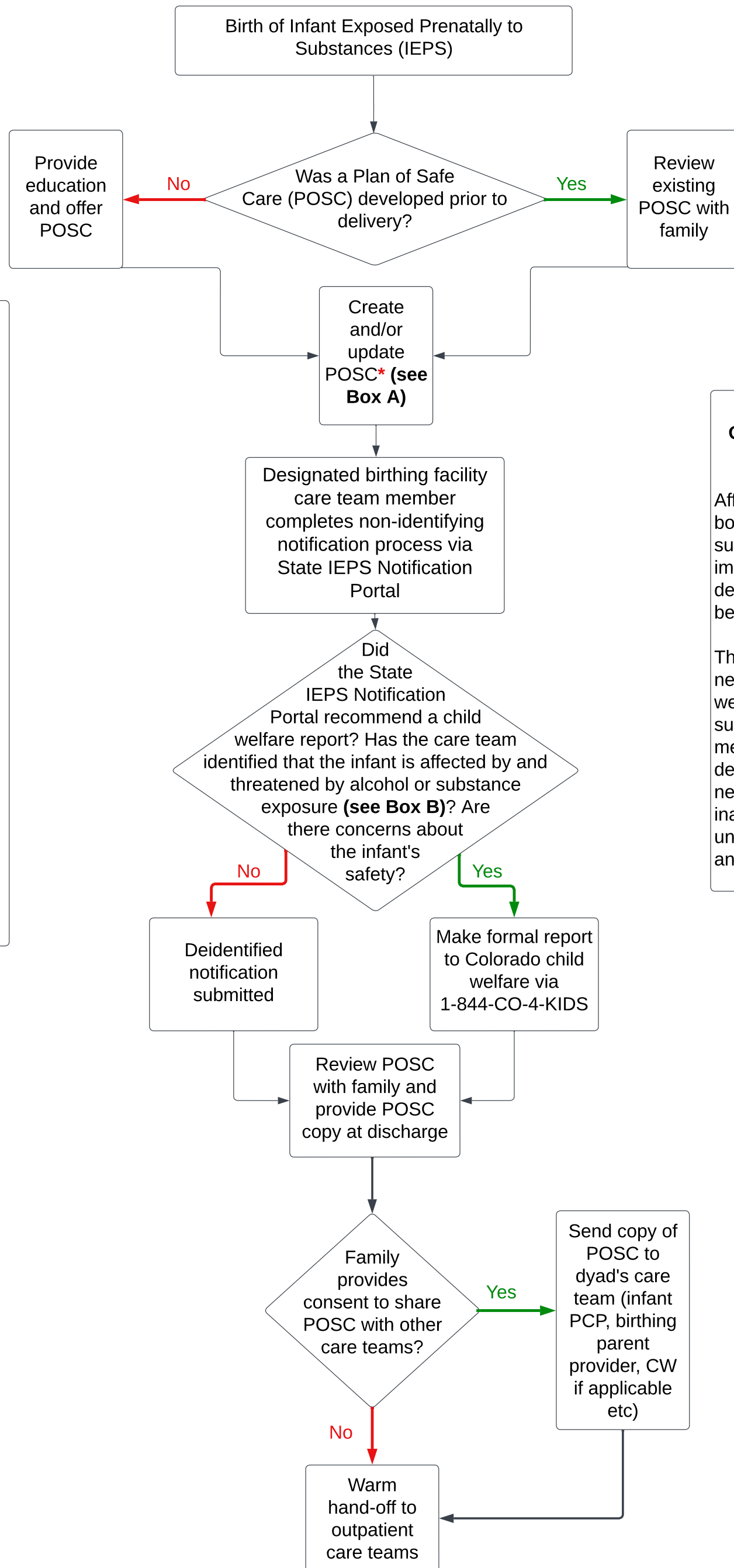


# Colorado Plan of Safe Care Hospital Workflow

Version 1.0 September 19, 2024



**Box A  
Plan of Safe Care Components**

- Medical readiness of dyad
- Referral of infant to Early Intervention Services, home visiting programs, etc.
- Connection of birthing person to postpartum care, behavioral health, and/or SUD resources
- Connection of family to social supports
- Caregiver & family discharge readiness and education
- Determination of follow-up and appointment scheduling for both newborn and birthing person
- Communication and warm hand-off to outpatient care teams

*If no safety concerns exist, declining a POSC does not warrant a report to child welfare. However, deidentified notification via the State IEPS Notification Portal is still required.*

**Box B  
Colorado Child Welfare Definitions**

Affected by: A child is born **affected** by alcohol or substance exposure when it impacts the child's physical, developmental, and/or behavioral response.

Threatened by: The newborn child's health or welfare is **threatened** by substance use when the medical, physical, and/or developmental needs of the newborn child is likely to be inadequately met or likely unable to be met by parents and/or caregiver.